



CORDLESS BACKPACK SPRAYER



TSBPS

www.thetoolshed.co.nz

TABLE OF CONTENTS

Product Details.....3
Specifications.....4
Product Identification.....5
Safety Guidelines.....6
Operation.....10
Maintenance.....12
Troubleshooting.....13
Exploded Parts List.....14

Thank You

For the purchase of this ToolShed product. We try our hardest to supply customers like you with the best quality products available, at the best price possible. We cant wait to continue working together in the future.

Please contact us for any servicing, replacement parts, or questions you might have about your ToolShed product by visiting our website, or calling: 0800 948 665.

PRODUCT DETAILS

<i>Product Model</i>	<i>ToolShed Cordless Backpack Sprayer</i>
<i>Product Code</i>	<i>TSBPS</i>

DISTRIBUTED BY:



Note:

This manual is for your reference only. Due to the continuous improvement of the ToolShed products, changes may be made at any time without obligation or notice.

Warranty:

This product may be covered under The ToolShed warranty. For more information, see our Terms & Conditions at www.thetoolshed.co.nz

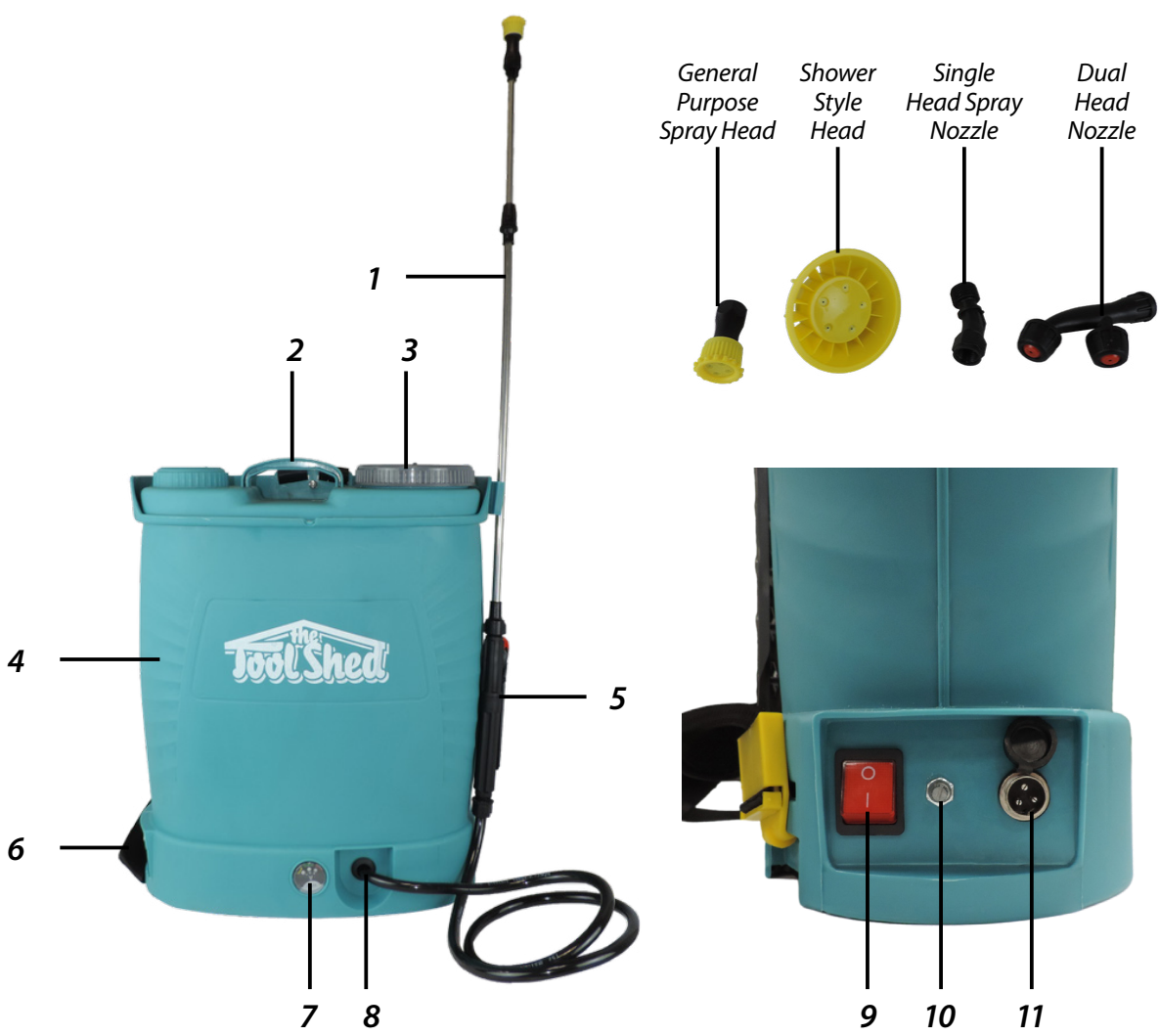
SPECIFICATIONS

Capacity	18 Litres
Run Time per Charge	9 Hours Approx.
Battery	12 Volt Internal, 10Ah Maintenance Free
Pump	Mini Diaphragm Pump
Flow Rate	0.16–1.7LPM
Pump Pressure	21–58 PSI
Net Weight	7.4 kg
Charge Time	5 Hours Approx.
Product Dimensions	40 x 190 x 555mm

Intended Use

The backpack sprayer is intended only for outdoor use in a well-ventilated area. The product is designed for spraying consumer-grade home and garden chemicals, such as insecticides, fungicides, weed killers, and fertilisers. The product may also be used to water plants.

PRODUCT IDENTIFICATION



- 1 Telescopic Stainless Steel Wand
- 2 Carry Handle
- 3 Tank Cover/Opening
- 4 16 Litre Tank
- 5 Trigger Handle
- 6 Foam Padded Straps (Not Shown)
- 7 Voltage Indicator
- 8 Hose Connector
- 9 On/Off Switch
- 10 Variable Flow Adjustment
- 11 Charging Port

SAFETY GUIDELINES



WARNING

READ ALL SAFETY WARNINGS & INSTRUCTIONS. Failure to follow instructions and warnings could lead to serious injury, electric shock, or fire.

Work Area Safety

- **Ensure that your work area is kept clean and well lit.** Lack of visibility and clutter greatly increase the risk of accident when using tools.
- **Keep bystanders, pets, and children clear when operating this power tool or machine.** They can cause distraction or risk injury to themselves.
- **Ensure you are not operating the power tool or machinery in the presence of dust, liquids, flammable gases, or anything that can create an explosive atmosphere.** Power tools and machinery can create sparks which can lead to ignition and fire hazards in working environments.

Personal Safety

- **Always wear personal protective equipment (PPE).** Eye protection, ear protection, dust masks, and other protective equipment will help to reduce the risk of personal injury or long-term illnesses.
- **Dress appropriately. DO NOT wear loose clothing that can get caught in moving parts.** Keep hair, loose clothing, jewellery, and anything else that could be of risk, away

from moving parts in the machine, or they could become caught therein.

- **Always remain alert and DO NOT operate power tools or machinery under the influence of any substances such as alcohol or drugs, including prescription medications.** Lack of focus could lead to injury or accidents while operating these power tools and machinery.
- **Always ensure proper footing and balance.** Overreaching can lead to slipping and falling which can result in injury or accident.
- **Ensure the power switch is in the OFF position before connecting any battery, or power source to the power tool or machinery.** This can cause injury as tools and machinery can suddenly fire incidentally when live, causing accidents.
- **Use all provided dust collection and extraction attachments, if included.** This equipment, along with the use of PPE dust masks, can help keep you safe from dust, and keep your work site clear from hazards.
- **Ensure loose parts such as wrenches or adjusting keys are removed before starting the power tool or machinery.**

SAFETY GUIDELINES

Battery Tool Use & Care

- **Recharge only with the charger specified by the manufacturer.** A charger that is suitable for one type of battery may create a risk of fire when used with another battery pack.
- **Use power tools only with specifically designated battery packs.** Use of any other batteries may create a risk of injury and fire.
- **When the battery pack is not in use, keep it away from other metal objects,** like paper clips, coins, keys, nails, screws or other small metal objects, that can make a connection from one terminal to another. Shorting the battery terminals together may cause burns or a fire.
- **Under abusive conditions, liquid may be ejected from the battery; avoid contact.** If contact accidentally occurs, flush with water. If liquid contacts eyes, additionally seek medical help. Liquid ejected from the battery may cause irritation or burns.
- **Do not use a battery pack or tool that is damaged or modified.** Damaged or modified batteries may exhibit unpredictable behaviour resulting in fire, explosion or risk of injury.
- **Do not expose a battery pack or tool to fire or excessive temperature.** Exposure to fire or temperature above 130°C may cause explosion.
- **Follow all charging instructions and do not charge the battery pack or tool outside the temperature range specified in the instructions.** Charging improperly or at temperatures outside the specified range may damage the battery and increase the risk of fire.

Power Tool & Machinery Use & Care

- **Use the correct tool for the job.** Forcing a tool to do a job it was not designed for increases the risk of accident or injury.
- **Disconnect tools and machinery from power, or remove batteries before doing any maintenance or adjustments, or before storing the tools and machinery.** This reduces or removes the risk of a power connection that causes the tool or machinery to accidentally fire, which can help prevent injury or accident.
- **Check the general condition of the power tool for damage or any problems that could affect the way the tool or machine works.** An unrepaired tool or machine can lead to accident and injury. Only have your tool or machine repaired with genuine parts from The ToolShed.
- **Only use the power tool and machinery with genuine parts or accessories that are designed to be used with this power tool and machinery.** Failure to do so could result in accident or injury, or damage your tool or machinery.
- **Store your tool or machinery out of reach of children, and away from untrained personnel when not in use.** Use by somebody untrained, or a child, could lead to accident or serious injury.

SAFETY GUIDELINES

Service

- **Have your tools and machinery serviced at The ToolShed with ToolShed replacement parts.** This will ensure that the safety of the power tool or machine is maintained.

WARNING

The warnings and precautions discussed in this manual cannot cover all possible conditions and situations that may occur. It must be understood by the operator that common sense and caution are factors which cannot be built into this product, but must be supplied by the operator.

Always Use Common Sense

- It is not possible to cover every conceivable situation you can face. Always exercise care and use your common sense. If you get into a situation where you feel unsafe, stop and seek expert advice. Contact your dealer, service agent, or an experienced user. Do not attempt any task you feel unsure of!
- **Do not let familiarity gained from the frequent use of tools allow you to become complacent and ignore tool safety principles.** A careless action can cause severe injury within a fraction of a second.
- **Backpack Sprayer Specific Safety**
 - Read the instructions. Be familiar with the controls and proper use of the product.
 - Always check for and repair leaks before using the product.
 - Thoroughly inspect both the inside and outside of the product, and examine the components before each use. Check for cracked and deteriorated hoses, leaks, clogged nozzles, and missing or damaged parts. Have your damaged product repaired before use. Many accidents are caused by poorly maintained products.
 - Never use the product with defective guards or shields, or without safety devices in place. Never use an incomplete or modified product. The use of a defective, incomplete, or modified product could result in a hazardous situation.
 - Follow the chemical manufacturer's instructions with respect to protective equipment.
 - Wear the following personal protective equipment when operating the product to help reduce the risk of injury:
 - » Face Mask
 - » Gloves
 - » Safety Footwear
 - » Upper Body Protection.
 - Wear proper protective clothing and equipment when:
 - » Filling the spray tank with spray materials
 - » Spraying
 - » Making adjustments
 - » Draining and cleaning the spray tank
 - » Changing spray materials
 - » Servicing the product.

SAFETY GUIDELINES

- To reduce the risk of fire or explosion, do not spray flammable liquids, such as gasoline.
- Do not spray where spark, flame, or other source of ignition are present.
- The product shall be used only with plant protection products approved by local/national regulatory authorities for plant protection products for use with backpack sprayers. Always follow the chemical manufacturer's instructions printed on their product labelling for use, cleaning, and storage. Chemicals should be stored out of the reach of children.
- Do not spray any material where the hazard is not known.
- Immediately turn off the product and remove the battery pack in the event of an accident or breakdown. Do not operate the product again until it has been fully checked by your local ToolShed.
- Do not spray in the direction of people or animals. Avoid spraying on windy days. The spray materials can be accidentally blown onto plants or objects that should not be sprayed. Always spray downwind.
- To reduce the risk of accidents and damage to the product, never operate with:
 - » Flammable liquids
 - » Viscous or sticky liquids
 - » Caustic or corrosive chemicals
 - » Liquids hotter than 50°C.
- Do not use flammable solvents or abrasive cleaning agents to clean the product.
- If there is no spray coming out from the nozzle or the spray amount is decreased, the hose and wand system may be blocked. Rinse and clean all parts of the hose and wand system (spray gun, filter in tank, spray wand, hose) with clean water.
- After a long time in storage or after winter, cleanse the unit by spraying with clean water. Check if there are any leakages or cracks.
- Never blow through the nozzles or other components by mouth.
- Avoid contact with plant control chemicals. Immediately change clothing that are contaminated with plant control chemicals.
- Do not pour hot or boiling liquids into the spray tank. These can weaken or damage the hose or spray tank.
- Do not overfill the tank.
- The spray area must be well-ventilated.
- Do not smoke, eat, or drink while using the product.
- Do not discharge spray materials directly against skin.

WARNING

Keep spray materials away from eyes. If spray materials come in contact with the eyes, wash them immediately with clean water. If irritation persists, immediately seek medical help.

OPERATION

- Charge the battery fully before use. Ensure the battery has a sufficient charge to allow uninterrupted operation. A well-charged battery ensures optimal spraying performance.
- Fill the barrel with the prepared liquid through the built-in screen filter.
- Check for leaks before starting. Observe the bottom of the barrel to ensure there are no signs of leakage. If any leaks are detected, address them before proceeding to avoid waste and potential hazards.
- Turn on the power switch and squeeze the switch handle to begin spraying. The sprayer allows for both instant and continuous spraying, giving you flexibility depending on your application needs.
- Three types of nozzles are included, each designed for specific spraying requirements:
 - 1. Sector Mist Nozzle:** Produces a fine, uniform mist, making it ideal for short crops and applying herbicide. When spraying, follow the wind direction and move in a parallel motion along one side to ensure even coverage and to reduce waste.
 - 2. Conical Mist Nozzle:** Best suited for pest control applications. This nozzle provides a concentrated mist, effectively targeting insects on plants. When using this nozzle, follow the wind direction and move in a criss-cross pattern along one side.
 - 3. Four-hole Adjustable Nozzle:** Designed for spraying high crops and fruit trees. It delivers a powerful spray to reach elevated areas. However, due to its high output, there may be a significant loss of pesticide, so use it efficiently to minimise waste.



WARNING

Do not smoke, eat, or drink while using the product. Do not spray in the direction of people or animals. Always spray downwind.

Notes

- The battery is pre-charged before delivery; however, it may gradually lose charge during transportation and storage. Before first use, check the battery level and recharge if necessary to ensure optimal performance.
- To prevent damage to the diaphragm, always avoid operating the sprayer without water. Running it dry may cause internal wear and reduce its lifespan.
- If you hear a buzzing sound from inside the sprayer or notice poor atomisation after extended use, this indicates low battery voltage and the need for immediate recharging.
- To charge the battery, connect the charger plug to the "Charging" jack without removing the battery from the sprayer. Each charging session should last at least 8 hours to ensure a full charge.
- When charging, place the charger in a dry, well-ventilated, and safe location, at least 50cm above the ground to prevent moisture damage or overheating.
- Before first use, perform a trial spray with clean water to check for any leaks or poor atomisation. This helps ensure the sprayer functions properly before applying chemicals.

OPERATION

To ensure safe and effective operation, keep the following points in mind while spraying:

- 1.** Always wear protective gear, including a mask and gloves. Avoid operating with exposed skin, and never allow pesticides to come into contact with your body.
- 2.** Do not spray against the wind, as this increases the risk of exposure.
- 3.** Never spray pesticides toward people, animals, or food, to prevent contamination or harm.
- 4.** Avoid prolonged operation in high temperatures, as excessive heat may cause discomfort or health risks.
- 5.** Do not consume alcohol immediately after spraying, as it may increase the effects of pesticide exposure.
- 6.** Strictly follow the pesticide manufacturer's safety instructions when handling and applying chemicals.

Restrictions on Liquid Use:

- 7.** Do not use the sprayer with strong acids, strong bases, or flammable liquids, as these substances may damage the unit or pose safety risks.
- 8.** Avoid using highly persistent or highly toxic pesticides on vegetables, fruit trees, tea plants, or medicinal plants to ensure food safety and environmental protection.

Cleaning & Maintenance:

- 9.** Thoroughly clean the sprayer after each use to prevent corrosion, clogging, or cross-contamination between different liquids. Any leftover residue from previous applications can harm crops or reduce the effectiveness of future sprays.

MAINTENANCE

- Before cleaning or performing any maintenance, you must ensure the tool is switched off and disconnected from the power supply.
- Compressed air is the most effective way to clean this tool. Always wear PPE safety goggles when cleaning tools with compressed air.
- Ventilation openings and switch levers must be kept clean. DO NOT attempt to clean by inserting pointed objects through openings.
- Do not use harsh chemicals or solvents when cleaning this tool.
- If you discover any damaged or broken parts, consult your nearest ToolShed for replacements and advise.



WARNING

Always be sure that the tool is switched off and unplugged before attempting to perform any inspection or maintenance.

Environment & Disposal

- Packaging materials are raw materials and can be re-used. Separate the different packaging materials and take them to the appropriate waste disposal facility. More information can be obtained from your local authorities.
- Old machines do not belong in your household garbage! Dispose of old machines appropriately, we are all responsible for the environment.

Cleaning & Maintenance

- **Exterior Cleaning:** Wipe the sprayer with a damp cloth to remove dirt and residue.
- **Interior Cleaning:** Add a small amount of water, shake well, then turn on the power briefly to flush out any remaining liquid.

Battery Usage & Storage

- For short-term use, recharging after every session is not necessary.
- For long-term storage, the battery should be fully discharged and recharged periodically at intervals of half a month, one month, or two months to maintain its lifespan.
- Do not operate the sprayer in temperatures above 45°C or below -10°C, as extreme temperatures may damage the unit.

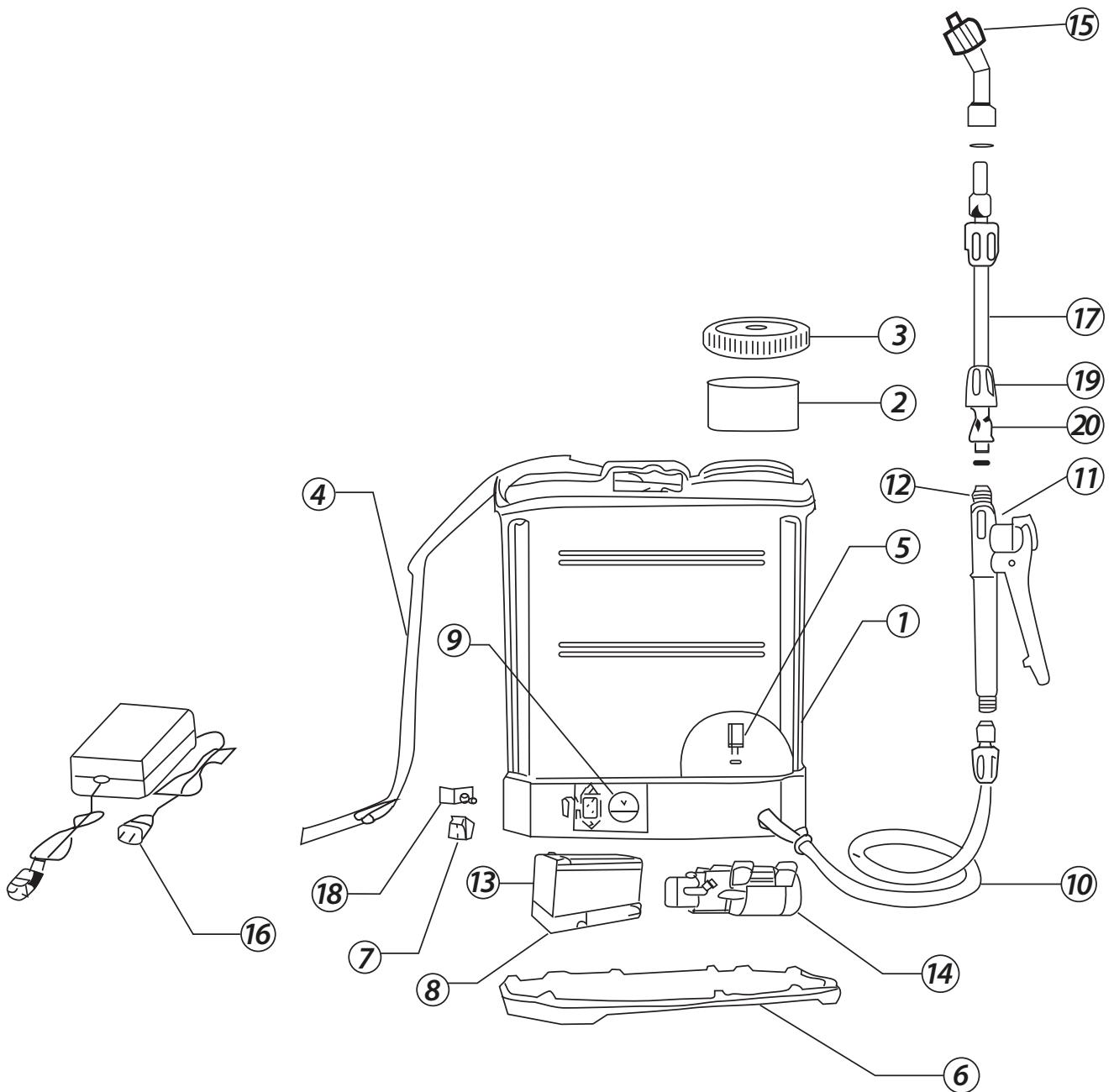
General Safety Precautions

- After six months of use, dismantle the base and check for loose screws. If any are loose, tighten them securely.
- Always turn off the power before storing the sprayer.
- Keep away from fire and never expose the base to water. Do not immerse the sprayer in water for cleaning or filling.
- Never spray powders or particles, as the sprayer is designed for liquids only.
- Do not attempt to disassemble the charger's housing, as unauthorised tampering may cause damage or safety hazards.

TROUBLESHOOTING

FAULT	POSSIBLE CAUSE	SUGGESTED SOLUTION
<i>The Motor Fails to Start after being Powered On.</i>	The power cables come off.	Dismantle the base to connect the cables soundly.
	The battery is out of power.	Charge the Battery
	The power switch has been damaged	Replace the switch.
<i>Abnormal Sound Heard in the Motor.</i>	The fastening screws of pump loose.	Tighten the screws.
<i>Leakage Occurs to the Bottom of Base</i>	The inlet and outlet tubes of pump break or loose at the joints.	Dismantle the base and tighten the tube clamp; Repair.
<i>Poor Atomisation</i>	The spraying hole was clogged.	Remove foreign matters.
	Spraying hole and split sheet wore out.	Replace the spraying sheet and split sheet
	Spraying sheet inversely mounted	Correct
	Filter screen was clogged.	Clean
	Leakage occurred to tubes at joints.	Tighten.
	Battery short of power	The alarm out of order, replace it; charge.
	Air remained in the pump.	Remove the nozzle or spraying rod to discharge the air.

EXPLODED PARTS LIST



1	Tank	7	On-Off Switch	14	Pump
2	Big Filter	8	Battery Cap	15	Bozzel
3	Tank Cover	9	Voltmeter	16	Charger
4	Belt	10	Hose	17	Lance
5	Small Filter	11	Handle Switch	18	Speed Control/Regulator
6	Tank Bottom	12	Cock Pin	19	Lance Nut
		13	Battery	20	Socket